



PORT OF KIEL

# SK NEWS

for customers and partners  
of the PORT OF KIEL  
Issue July 2021

Dear friends of the port of Kiel,



this summer, thanks to low incidence rates, we are gradually returning to something like normality in Schleswig-Holstein. Freight numbers are at a high level and sea tourism is also returning. At the end of May we welcomed the first cruise ship at the Ostseekai. Strict hygiene concepts, reduced guest capacities and voyages without shore excursions have paved the way for the resumption of business. So far very successful, as 30 Baltic Sea cruises have already departed from Kiel alone by the end of June. Shore excursions are now possible again, at least in Sweden. We hope that soon Norway and the countries around the Baltic Sea will also gradually open up.

We are optimistic about the future and are pleased that we were able to commission the on-shore power plant both for cruise ships at the Ostseekai and for Stena Line ferries at the Schwedenkai. My thanks go in particular to the State of Schleswig-Holstein, which has provided substantial support for this project.

I hope you enjoy reading our SK news!

Yours,

Dr Dirk Claus  
Managing Director

## SHORE POWER AT OSTSEEKAI

An important step for climate protection in the port of Kiel. At the cruise terminal Ostseekai, the Minister of Economics, Transport, Labour and Technology and Tourism of the State of Schleswig-Holstein, Dr Bernd Buchholz, Kiel's Lord Mayor Dr Ulf Kämpfer, together with the CEO of the Costa Group, Michael Thamm and Dr Dirk Claus, commissioned Europe's first on-shore power plant that can supply two large ships in parallel.



On 16th June, the "AIDASol" was the first cruise ship to be connected to the shore power supply. And the "AIDAprima", which will sail from Kiel from July, is already equipped for shore power and will be supplied at the Ostseekai.

Minister Buchholz said: "We are taking a big step towards making shipping in Schleswig-Holstein even more eco-friendly."

The State of Schleswig-Holstein has supported the construction of the 13.5 million euro plant with about 9 million euros and successfully lobbied at the federal level for a reduction in the EEG levy on shore power. The system at the Ostseekai also supplies the Stena Line ferries at the Schwedenkai with hydroelectric power produced in a climate-neutral way. In addition, the Color Line ferries at the Norwegenkai have

already been connected to the on-shore grid with a smaller system since May 2019.

"All inner-city terminal facilities now have a shore-side power connection. The Scandinavian ferry companies are leading the way in the use of electricity and I am very pleased that AIDA Cruises is now the first cruise line to use on-shore power in Kiel. In doing so, we are already covering the majority of the energy requirements of the ships berthed in the inner city area without emissions," says Lord Mayor Kämpfer.



Kiel is also already planning an on-shore power plant for the Ostuferhafen, which is scheduled to go into operation in 2023. From 2024 onwards, around 85% of the energy requirements of ships calling at Kiel can be covered by green electricity. The port is thus already very close to the goal of zero emissions at berth.

## SEA TOURISM FROM KIEL RETURNS

Sea tourism from Kiel has regained momentum. Since the first call by AIDA Cruises at the end of May, only cruises without the possibility of shore excursions had been offered; now, however, the first destinations can be called at

again. Due to the opening of the Swedish ports, TUI Cruises has decided to operate the "Mein Schiff 6" from Kiel in June in addition to the "Mein Schiff 1". Kiel's geographical location is once again proving to be a great advantage:

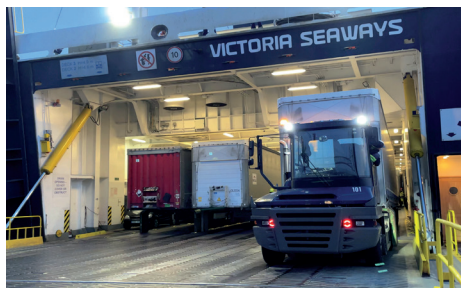


Both Stockholm and Gothenburg are easily accessible from the fjord on the mainly short, three- or four-day voyages. In July, sea tourism will take the next step when the "AIDAsol" is replaced in Kiel by the larger "AIDAprima" and the shipping company MSC also stations a ship in Kiel.

With the "MSC Seaview", one of the most modern and innovative ships in the fleet sails seven-day cruises from the Ostuferhafen. Measuring a good 166,000 GT, this ship has plenty of space and particularly generous outdoor areas for the summer in the north.

## FREIGHT CONTINUES TO GROW

Cargo handling in the seaport of Kiel continues to grow in the first half of 2021. From January up to and including May, more than 3 million tonnes of cargo have already been loaded or unloaded via the various quay and terminal facilities. This corresponds to an increase of six percent compared to the same period in the previous year. The main drivers of this growth



are the ferry lines to Klaipeda in Lithuania and Gothenburg in Sweden.

In addition to the growth in ferry traffic, the PORT OF KIEL is currently handling a lot of sawn timber arriving from St. Petersburg on conventional cargo ships. This is mainly Siberian larch, which is used as construction timber in outdoor areas.

## COLOR LINE IS BACK

After a break of more than five months, the large Color Line ferries are back on the Kiel - Oslo route. On 10th June, the "Color Magic" berthed again at the Norwegenkai for the first time. Already on this first voyage, a good 1,000 Norwegians were on board, so that the ship was fully booked under the applicable hygiene regulations. Initially, guests were not allowed to go ashore in Kiel and passengers from Germany were not yet allowed to board the ship in June. The Norwegian government's pandemic plan provides for foreign tourism to be possible again once a fourth stage will have been reached. Since 24th June, the sister ship of the "Color Magic", the "Color Fantasy", has also been back in regular service. It is taking over for the cargo ferry "Color Carrier", which had to maintain the Kiel - Oslo connection on its own in recent months and is now undergoing a



shipyard stay. Since the return of the large ferries, accompanied trucks can again be carried on the Norway route in addition to the unaccompanied cargo units (trailers, containers).

## NAME CHANGE: NORDMOLE

The Scheerhafen at the entrance and exit to the Kiel Canal is now called Nordmole. The PORT OF KIEL is thus following its neighbour, the German Navy, which has renamed the jetties at the naval base in the Wik district as part of its so-called tradition decree. Names such as Tirpitz are now a thing of the past. The former (civilian) Scheerhafen adjacent to the naval base will thus be called Nordmole by the port of Kiel with immediate effect.

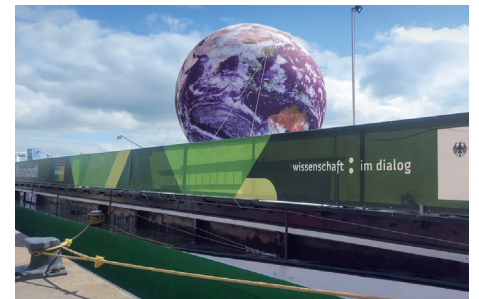
The Mibau bulk carriers, which deliver chippings from Norway, dock at the Nordmole. In recent years, the handling capacity there has continued to grow and last year again exceeded the 600,000 tonne mark. In the meantime, a new generation of Mibau-Stema ships has also



berthed in Kiel, which has a carrying capacity of over 40,000 tonnes.

## SCIENCE AT SARTORIKAI

More than 100 metres of ship, filled to the brim with research to touch and marvel at. At the end of June, the MS "Wissenschaft" - the converted motor ship "Jenny" - moored at Kiel's Sartorikai with the exhibition "Bioeconomy". On board are over 30 exhibits explaining the latest developments in the field of sustainable economic activity. The exhibition shows: Science and research have already produced numerous technologies and processes that can contribute to a sustainable way of life.



Visitors were impressed by the ideas on how fossil raw materials can be replaced by bio raw materials, for instance. The station "Multitalent Popcorn", for example, surprisingly showed how popped corn can serve as a substitute for styrofoam. The floating exhibition, which will be docking in 31 cities until October, has been initiated by the Federal Ministry of Education and Research.

### IMPRINT

SEEHAFEN KIEL GmbH & Co. KG  
Schwedenkai 1 | 24103 Kiel, Germany  
T. +49 (0)431 9822104  
presse@portofkiel.com  
www.portofkiel.com